

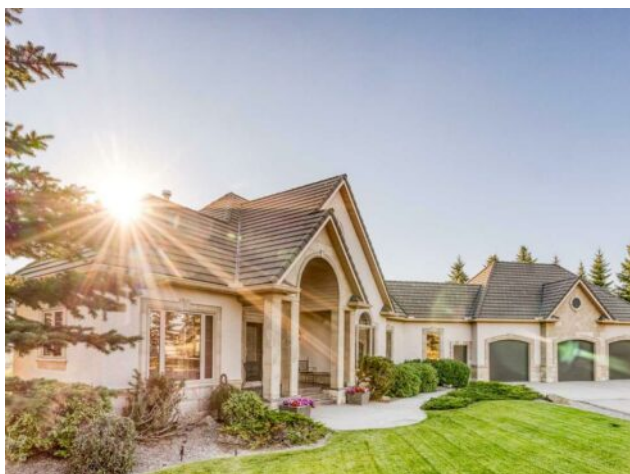


DON'T GAMBLE WITH YOUR HOME.
RE/MAX JACK
 OUELLETTE
 ASSOCIATE

780-831-7725
 jackadmin@gpremax.com

43062 Township Road 250
 Rural Rocky View County, Alberta

MLS # A2205704



\$5,247,900

Division:	NONE		
Type:	Residential/House		
Style:	Acreage with Residence, Bungalow		
Size:	2,444 sq.ft.	Age:	2000 (25 yrs old)
Beds:	3	Baths:	2 full / 2 half
Garage:	Quad or More Attached		
Lot Size:	160.00 Acres		
Lot Feat:	Back Yard, Farm, Landscaped, Lawn, Level, Many Trees, No Neighbours Beh		

Heating:	In Floor, Forced Air, Natural Gas	Water:	Well
Floors:	Carpet, Hardwood, Tile	Sewer:	Septic System
Roof:	See Remarks	Condo Fee:	-
Basement:	Finished, Full	LLD:	4-25-4-W5
Exterior:	Stone, Stucco	Zoning:	AG
Foundation:	Poured Concrete	Utilities:	-

Features: Bookcases, Built-in Features, Ceiling Fan(s), Closet Organizers, Double Vanity, French Door, Granite Counters, High Ceilings, No Smoking Home, Open Floorplan, Smart Home, Storage, Walk-In Closet(s), Wet Bar

Inclusions: Pool Table and accessories

****Enjoy the Cinematic Video**** Extraordinary Estate – Where Luxury Meets Serenity. Discover the pinnacle of privacy and tranquility on this breathtaking 160-acre property, perfectly framed by panoramic mountain views and thoughtfully enhanced with 16 solar panels for sustainable living. This exceptional estate features a stunning walk-out bungalow with over 4,660 sq ft of luxurious living space, offering 3 bedrooms, 2 full baths, and 2 half baths—where refined country living meets modern comfort. Step into an expansive, light-filled open-concept main level, where every detail is crafted to perfection. At the heart of the home lies a chef’s kitchen that is a culinary dream, equipped with high-end Sub-Zero and Wolf appliances designed for precision and performance. Generous custom cabinetry provides ample storage, while the seamless flow to the living and dining areas creates a warm and inviting atmosphere. From every angle, you are treated to sweeping mountain vistas that enhance the beauty of this remarkable home. The dining area opens effortlessly onto an expansive outdoor space, where a built-in BBQ makes al fresco dining a delight, all set against the backdrop of endless skies and rugged peaks. The main floor’s primary suite serves as a private sanctuary, designed for ultimate relaxation. The spa-like ensuite offers a deep soaker tub to melt away the day, along with dual vanities and a spacious walk-in shower—creating a serene space to unwind after exploring your vast property. The fully developed walk-out lower level is designed for leisure and entertainment. A spacious recreation room provides the perfect setting for gatherings, while the stylish bar ensures that hosting friends and family is effortless. Additional guest accommodations on this level guarantee that every visitor feels right at home. For

horse enthusiasts, the property offers exceptional amenities, including cross fencing that allows for seamless pasture management and a well-built shelter to protect your horses or other animals, ensuring their comfort year-round. Additionally, a versatile Quonset on the property provides ample space for storage, equipment, or hobby use, making it ideal for a variety of rural lifestyle needs. With rolling hills, open pastures, and majestic mountain views at every turn, this estate captures the essence of serene countryside living. The inclusion of 16 solar panels underscores a commitment to sustainability, blending environmental consciousness with modern convenience. This extraordinary property offers more than just a home—it's a lifestyle. Whether you're an equestrian, nature enthusiast, or simply seeking a peaceful retreat away from the hustle and bustle, this rare and remarkable estate invites you to embrace its beauty, privacy, and endless possibilities.....A must see to appreciate !!!