

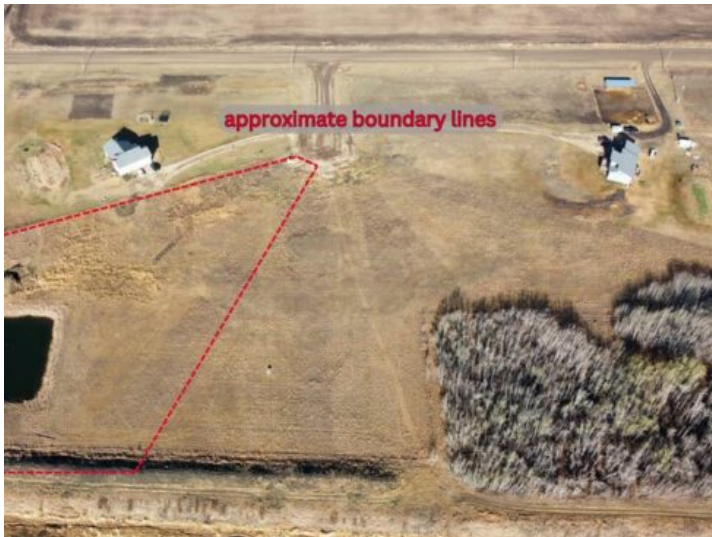


DON'T GAMBLE WITH YOUR HOME.
RE/MAX JACK
OUELLETTE
ASSOCIATE

780-831-7725
jackadmin@gpremax.com

5, 715049 Range Road 40
Rural Grande Prairie No. 1, County of, Alberta

MLS # A2127117



\$159,000

Division: NONE

Lot Size: 3.94 Acres

Lot Feat: -

By Town: Bezanson

LLD: 31-71-3-W6

Zoning: CR-2

Water: -

Sewer: -

Utilities: -

One of three adjoining vacant lots for sale in a 5-lot subdivision located less than 1km off the paved HWY 670 in the Glen Leslie area, just 15 minutes east of Grande Prairie. Buy the lot, pick your plan, and choose your own builder. Approaches are in and power and gas are already on the lot. Lot 5 is 3.94 acres and has a dugout on the property. And with two lots for sale to the north, you could buy two and double up your land size or have your friend or family member purchase a property too so you can know who your neighbors will be! Lots are zoned CR-2. Take a drive out and have a look or contact your favorite Real Estate Professional for more information.